



September 14, 2021

**VIA EMAIL: [redistricting.lacity@lacity.org](mailto:redistricting.lacity@lacity.org)**

City Council Redistricting Commission  
City of Los Angeles  
200 North Spring Street, Room 275  
Los Angeles, California 90012

Re: Bel Air-Beverly Crest Neighborhood Council Input on Redistricting

Dear Chair Ali and Commissioners:

Bel Air-Beverly Crest Neighborhood Council (BABCNC) was established in 2002 and has for nearly 20 years served as the venue for coordination and cooperation across the community of interest that it serves. The BABCNC represents the hillside communities stretching from Laurel Canyon to Sepulveda Boulevard, and from Sunset Boulevard to Mulholland Drive. The BABCNC is currently represented by two City Council districts.

Our Redistricting Task Force has reviewed the census data and used the Districtr mapping tool to explore the possibilities for representing our neighborhood council area while achieving the legally mandated goals of the redistricting process. From this experience we have the following recommendations:

First, the 405 Freeway should represent a hard boundary for the western edge of Council District 5, all the way through the Sepulveda Pass to the southern extent. This natural break separates

**OFFICERS**

President  
**Travis Longcore**  
Vice President – Operations  
**Robin Greenberg**  
Vice President – Leg. Affairs  
**Jamie Hall**  
Secretary  
**Nicole Miner**  
Treasurer  
**Vadim Levotman**

**COMMITTEES/CHAIRS**

Executive – **Travis Longcore**  
Planning and Land Use – **R. Schlesinger & S. Savage**  
Bylaws, Rules and Elections – **Cathy Wayne**  
Emergency Preparedness –  
Outreach – **Robin Greenberg**  
Traffic Committee – **Irene Sandler**  
Public Works and Telecommunications –  
Budget and Finance – **Nicole Miner**  
Neighborhood Purpose Grant – **André Stojka**

**STAKEHOLDER GROUPS**

Bel Air Association  
Bel-Air Crest Master Association  
Bel Air Hills Association  
Bel Air Ridge Association  
Benedict Canyon Association  
Casiano Estates Association  
Doheny-Sunset Plaza Neighborhood Assn.  
Holmby Hills Homeowners Association  
Laurel Canyon Association  
Residents of Beverly Glen

**RESIDENTIAL DISTRICTS**

Bel Air District  
Bel Air Glen District  
Franklin-Coldwater District  
North of Sunset District

**NON-RESIDENTIAL REPRESENTATION**

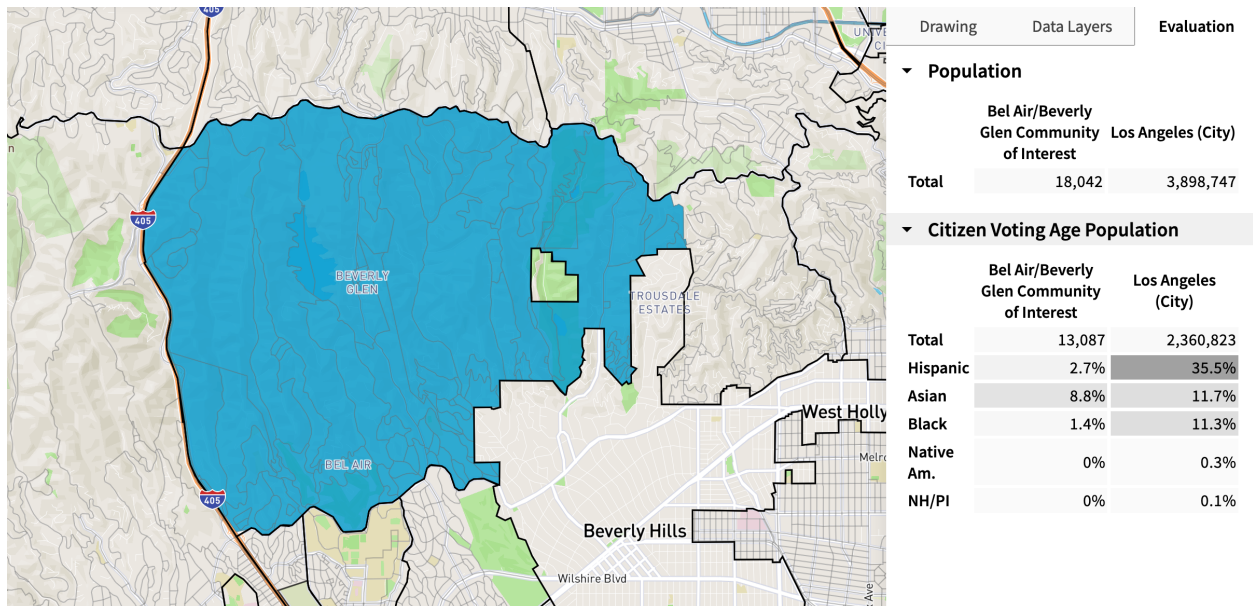
At-Large Members  
Commercial or Office Enterprise Districts  
Custodians of Open Space  
Faith-Based Institutions  
Public Schools & Private Schools

communities of interest, their orientation toward commercial districts and other important community features.

Second, our draft maps include two or more districts that extend from the San Fernando Valley through to the Westside because of the similarity of interests shared among hillside residents on either side of Mulholland Drive and extending down to the foothills on either side. We have mapped several alternatives that do this and it is feasible.

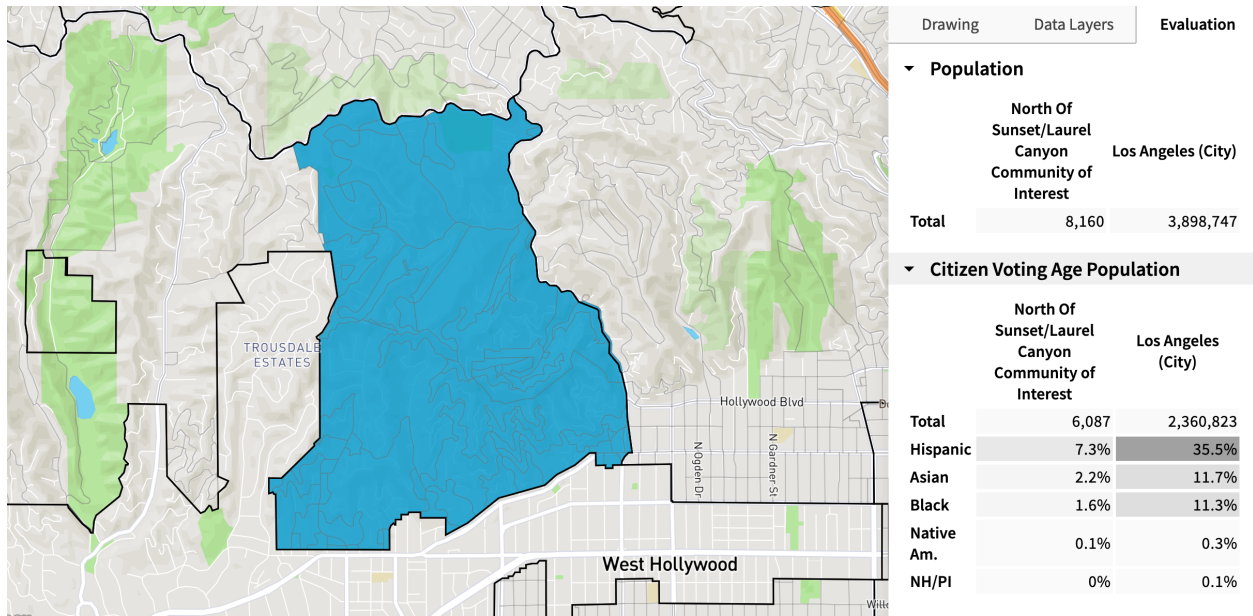
Third, our extensive discussions stimulated by the Districtr tool resulted in a consensus that the connection of the western portion of the BABCNC territory to the areas to the south (including Westwood, Century City, Beverlywood, Cheviot Hills) is more important to keep communities of interest together (including the concentration of similar religious institutions and associated populations) than it is for Laurel Canyon and North of Sunset neighborhoods to be kept in the same Council District as this western portion of BABCNC. Should BABCNC continue to be represented by two Council Districts, then Coldwater Canyon, Bowmont Drive, Hazen Drive, and Briarcrest Drive should be kept with the western portion of the territory (CD 5). This line is also used by the police department to separate its service areas.

We have developed sample maps that illustrate these principles. The two sub-communities within the BABCNC territory include Bel Air and Beverly Glen through Coldwater Canyon, as follows:



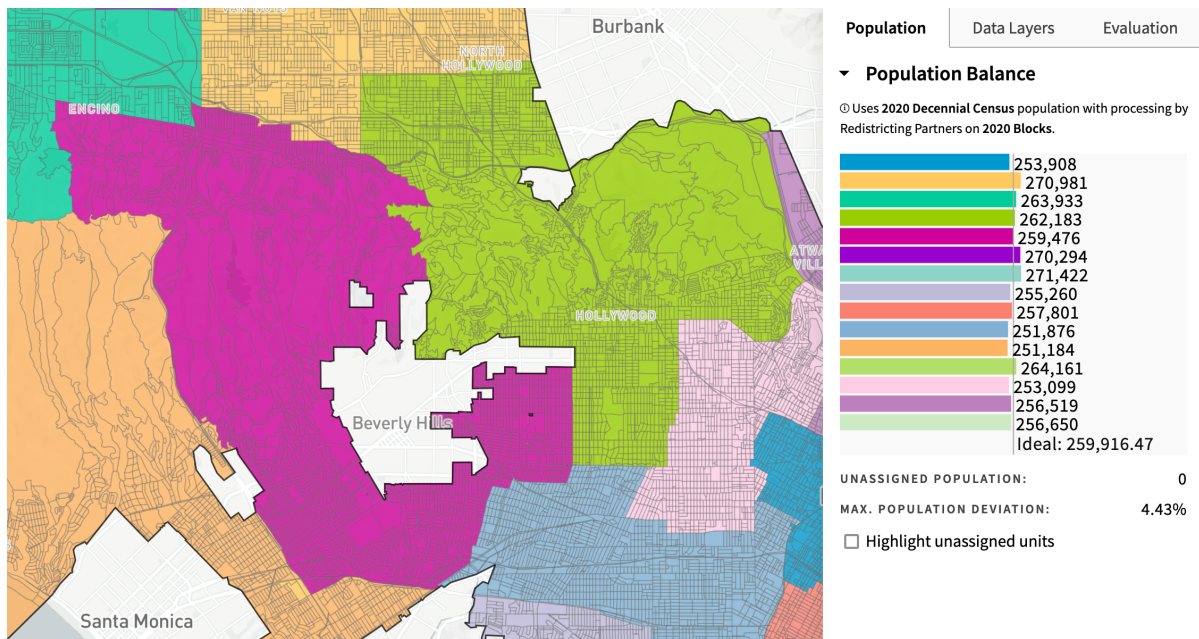
<https://districtr.org/COI/47000>

And then North of Sunset and Laurel Canyon:



<https://districtr.org/COI/47001>

These two parts of the BABCNC territory, if represented by two City Council districts in the redistricting, would join with similar communities contiguous with them. In this example, the BABCNC territory is represented by CD 4 in the east and CD 5 in the west, both of which include the similar hillside areas on the north and south slopes of the mountains.

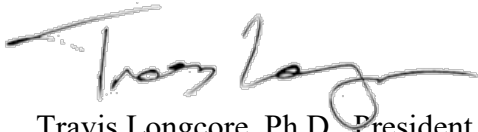


<https://districtr.org/plan/47002>

Although we prepared a map for the entire city as a demonstration that this configuration is possible, we focus our recommendation on CD 4 and CD 5 and how the BABCNC territory could be integrated into those districts in a manner that keeps together our communities of interest.

This letter was approved by a 15-0 vote of the Bel Air-Beverly Crest Neighborhood Council at a special meeting, publicly noticed pursuant to the Brown Act, on September 14, 2021, with a quorum of 15 Board members present and voting.

Sincerely,

A handwritten signature in black ink, appearing to read "Travis Longcore". The signature is fluid and cursive, with a long horizontal stroke extending to the right.

Travis Longcore, Ph.D., President  
Bel Air-Beverly Crest Neighborhood Council  
[tlongcore@babnc.org](mailto:tlongcore@babnc.org)